

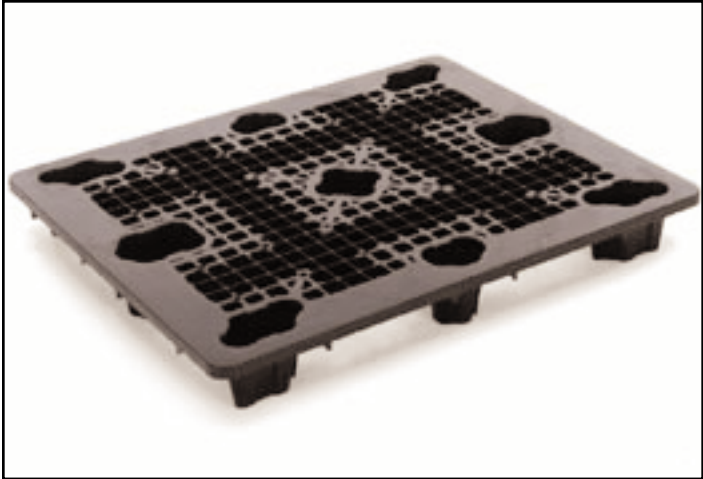
# RANDOM MEDIA BIO-DRAIN

Jaeger Bio-Drain offers one of the most effective systems for your underdrain needs. With its 60+% open area to allow easy flow of air, waste water and biomass, the drain virtually eliminates any blockage.

Each panel measures 40X48 inches of flat deck space. Constructed of HDPE, with UV protection, this system offers 10,000 #'s of static load. The superior design of Jaeger Bio-Drain allows you the flexibility to increase capacity without having to replace the entire drain system, as in other lighter units. Available in various heights of 5.5 - 6.5”.

When used with the Jaeger Cascade Bio-Rings, the combined products offer one of the most effective bio-filter system on the market today.

Other sizes available to fit your needs.



## 40 x 48 RANDOM MEDIA BIO-DRAIN

Model	Length	Width	Hat	Height	Wet. (lbs)	Nest Ratio	Forklift Entry	Handtruck Entry	Load Capacity (lbs)		48' Trailer	53' Trailer	Stocked Color
									Static	Dynamic			
40 x 48 CISC LDS	48.2	40.2	5.5	6.5	21.5	2.5:1	4 way	4 way	10000	2300	1008	1290	Black
	122.4	102.1	14	16.5	9.75				4,536	1,043.28			

\*Metric Values in Red.